



Community Emergency Volunteers

‘...A bottom up approach...’



Inspiration

- Natural systems have built in resilience
- If I chop the end of my finger off it knows how to regenerate itself
- Community Resilience should aim to empower communities to help themselves
- Currently in many communities there is a 'learned helplessness'



DNA in my finger provides
a resilience blue print for
my body



How Did it Start?

- BoA Flooding of 2013-14
- Alluvial and Surface Water
- Slow Initial Agency Response
- Water already entering properties when blue and amber lights turned up
- Community had to cope



My House



Why Multi-role?

- Could have been just a Flood Warden Group
- Volunteers could have lost interest over time
- More Roles = More Motivation
- Currently Fulfil 4 main roles in collaboration with partners
- Investigating others



Top Priorities

- Recruitment
- Training
- Equipping
- Health & Safety
- Partnering Locally with other Agencies



Recruiting
Poster

Training night



Governance

- We implement the Towns agreed Emergency Plan
- Set up under the Town Council
- They deal with Finance and Insurance
- I report to Emergency Planning Subcommittee of Town Council
- We have agreed 'Trigger' procedures, roles and responsibilities in place with partner Agencies.



Equipment

- We have a storage container in the BoA Fire Station Yard
- This holds all our PPE, tools, consumables
- Our vehicle is parked outside our container with permission of DWFRS




Vehicle and Container




Social Media

- We have a Blog (www.boa.cevs@blogspot.com)
- Our twitter feed (@BoATCCEVS) was getting 1000 hits during recent flood warning Feb 2016

Tweet Activity ✕



BoA TC CEVs @BoATCCEVs
#floodwarning #BradfordonAvon -
pack horse bridge approach at Barton
farm under water 1pm. Do not
attempt to cross
pic.twitter.com/YOO1DxPdZF

 **Reach a bigger audience**
Get more engagements by promoting this Tweet!

[Get started](#)

Impressions	1,004
Total engagements	71
Media engagements	37
Profile clicks	10
Link clicks	9
Detail expands	7
Retweets	6
Likes	1
Hashtag clicks	1



Finance

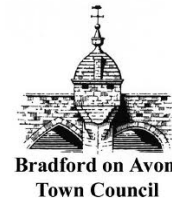
- The Town Council have set aside a budget for Emergency Planning out of their stipend
- Wiltshire Council have provided funds through the Area Board as well as donating equipment
- We have successfully applied for £18,000 grant funding from SSEN Resilience Fund
- We have raised £1000 sponsorship from local companies.



HITACHI
Inspire the Next

Working in partnership with

Wiltshire Council
Where everybody matters



Future?

- Other Parishes and Town Councils are looking to set up similar schemes in their area
- We have produced a starter pack based on our experiences in Bradford to help other communities
- A 'social franchise' model of community resilience with a shared identity for Agency engagement.
- Engagement organised through LRF to harmonise Agencies Community Engagement
- Nothing stopping it crossing the County Border!

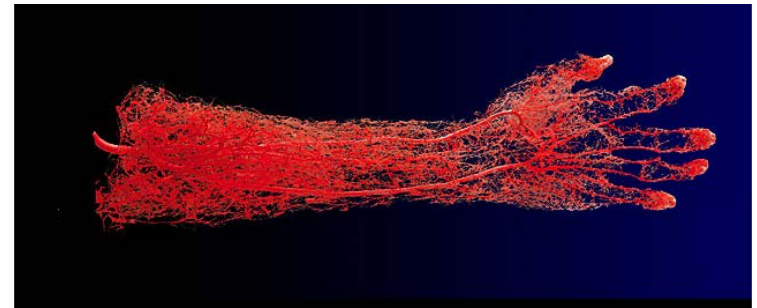


Wiltshire Area Boards



Providing support

- My finger has the capacity to heel itself.
- It needs a single blood stream to provide my finger with all the support it needs.
- How do we ensure our communities have a single stream of support?
- Could the CEV model be the blueprint for UK community resilience



Provide a single support system to Communities via the LRF

